

### 3.4.3 Internal standard

The internal standard was chosen to be propylparaben. The retention time of propylparaben was 5.1 min in comparison to 6.2, 7.98, and 10 for amlodipine, glimepiride, and atorvastatin, respectively (Fig. 3.3). In addition the % precision of the internal standard was <2% as well as all the drugs (Table 3.6).

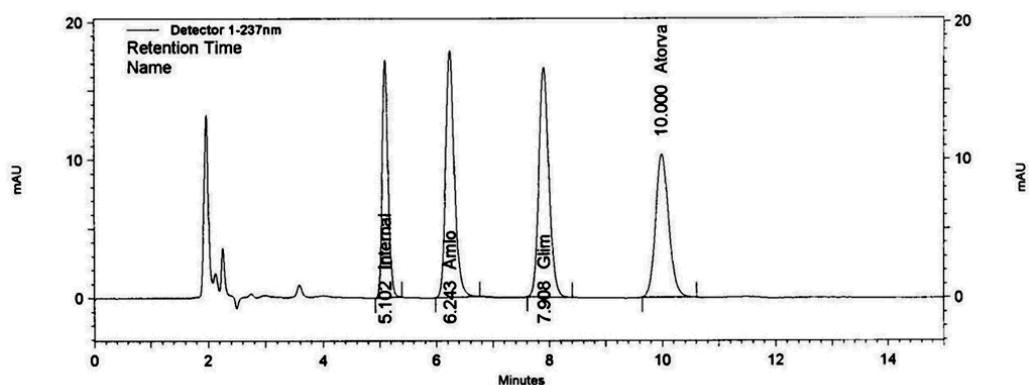


Figure 3.6. The chromatogram of a sample containing a mixture of amlodipine, glimepiride, atorvastatin, and propylparaben.

Table 3.9. Precision of the analytical method for a sample-containing one concentration of the three drugs with propylparaben. (conc. = 0.05)

Sample#	Amlodipine	Glimepiride	Atorvastatin	Propylparaben
1	191599	206056	166904	122837
2	189468	205903	165274	122707
3	190002	205594	165494	123205
4	191369	203834	164998	123291
5	190159	203496	164864	123337
6	191505	202469	164791	122528
Average	190684	204558	165387	122984
RSD%	0.43	0.73	0.47	0.28